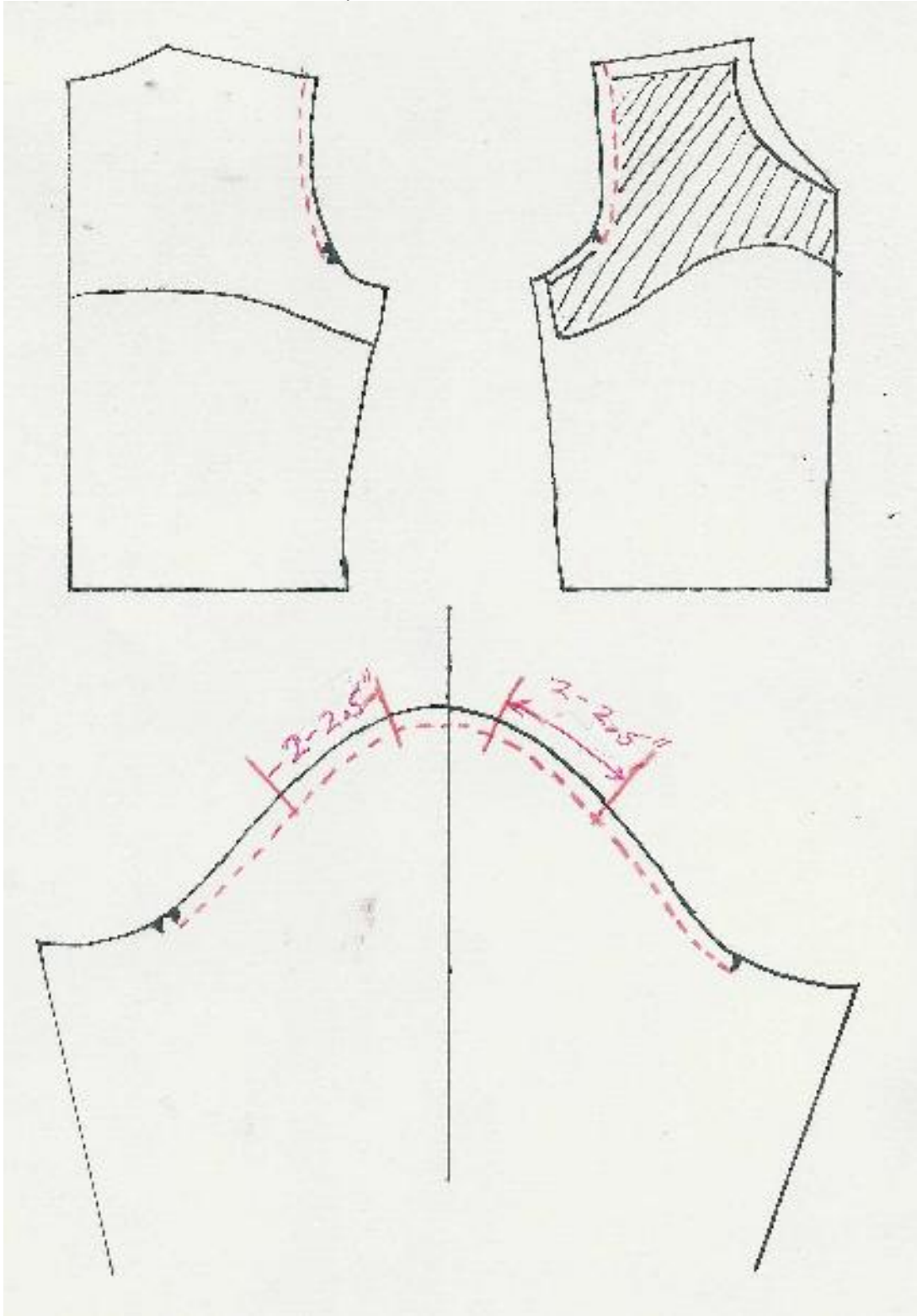


Leilani Bennett Sleeve Lecture

PenWAG February 11, 2006



Determine Ease in Sleeve Cap

1. Stand Tape measure on end at stitching line.
2. Measure armhole and sleeve cap between notches.
3. Determine how much ease has been allowed.

A. Standard (American pattern) sleeve ease for basic set-in sleeve is 1"-1.5".

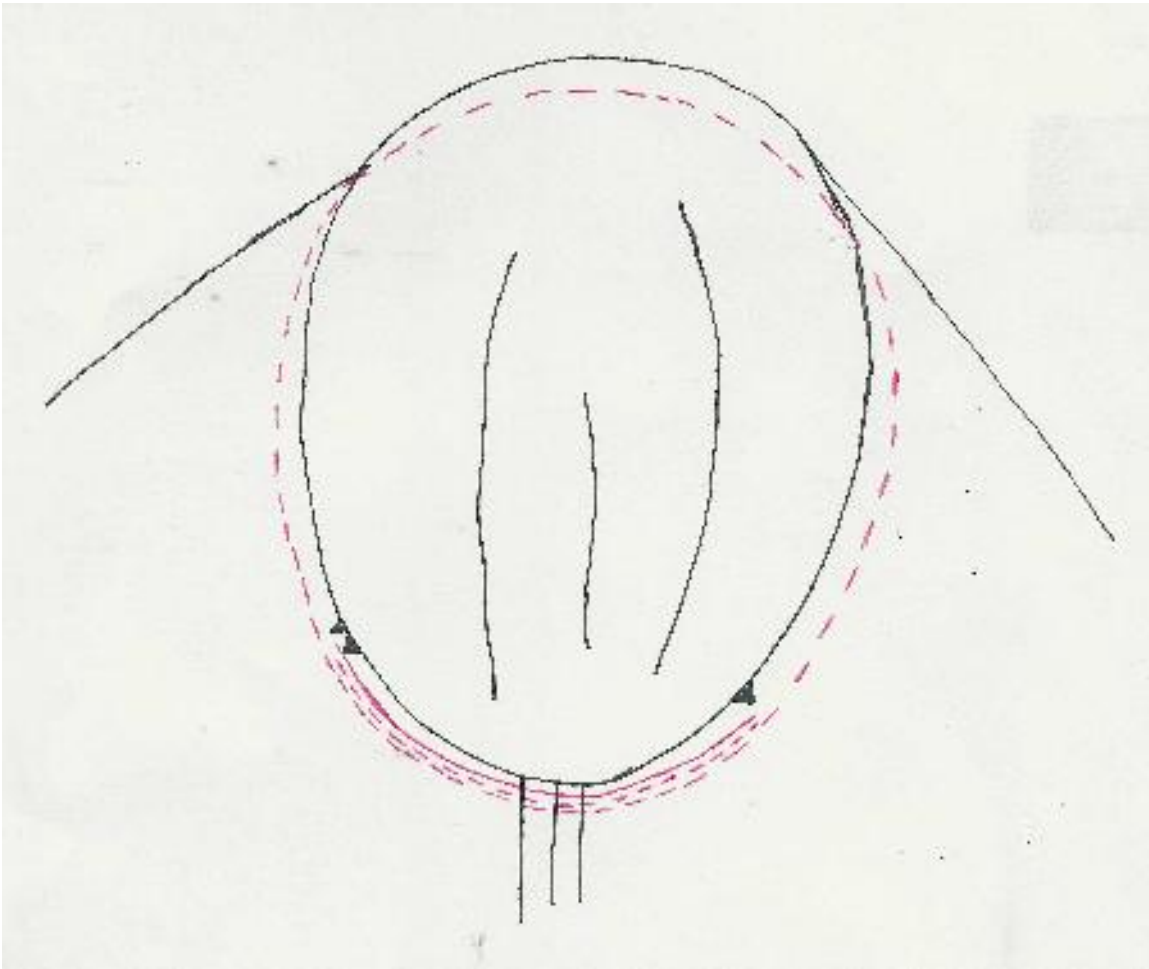
B. Most fabrics: 1" is adequate but more is more attractive, if it can be eased-in.

C. Jacket sleeves in wool have up to 3".

D. There should be more ease in at back of sleeve.

E. Most of the easing should fall at about 1" from each side of cap center in a 2" to 2.5" area.

Inserting and Trimming Sleeve

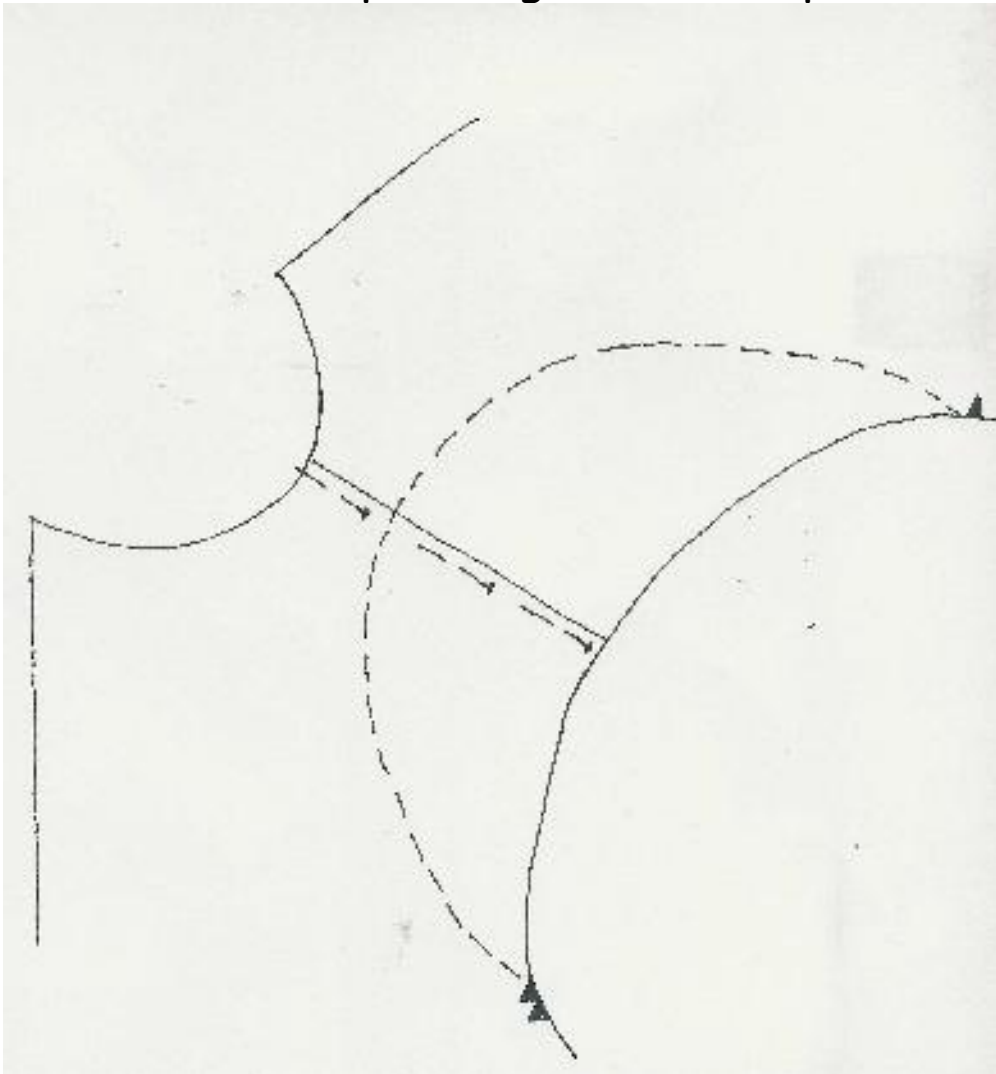


1. Sew second stitching a scant $1/16^{\text{th}}$ inch from first stitching line between notches.
2. Trim away excess seam allowance between notches to $1/8''-1/4''$.

Shoulder Pads

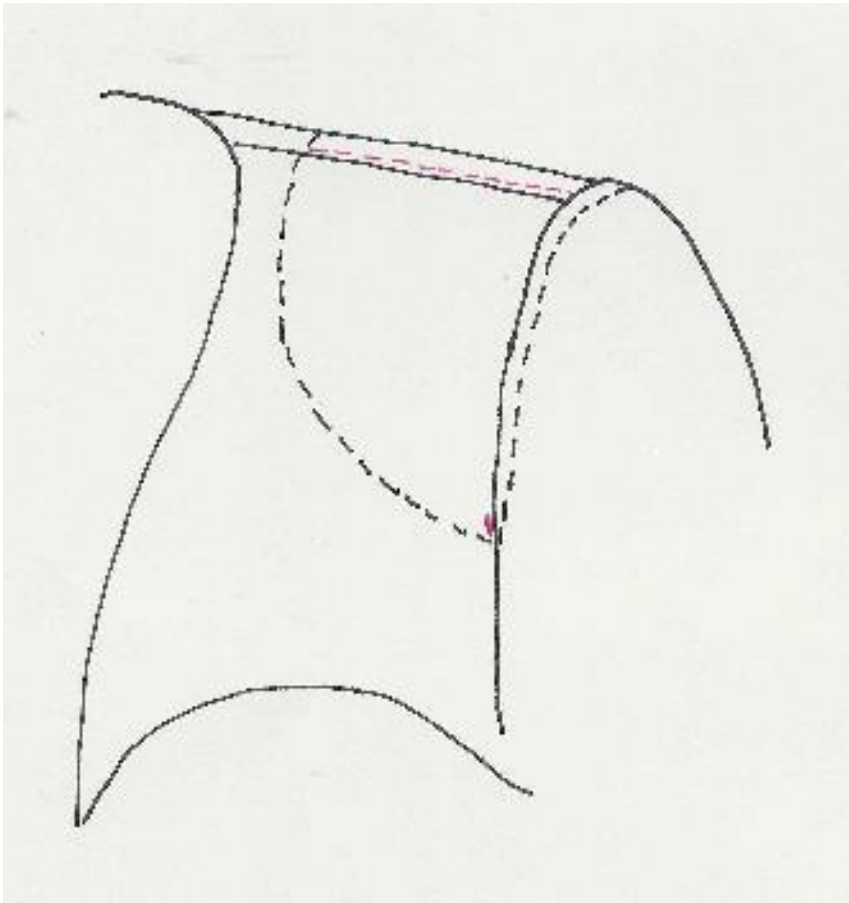
To make:

1. Make a pattern using the armhole curve from notch to notch, and another curve drawn about 1" from neck edge.
2. Cut graduated layers of poly fleece and stab stitch together.
3. Steam over a pressing ham to shape.



To Apply:

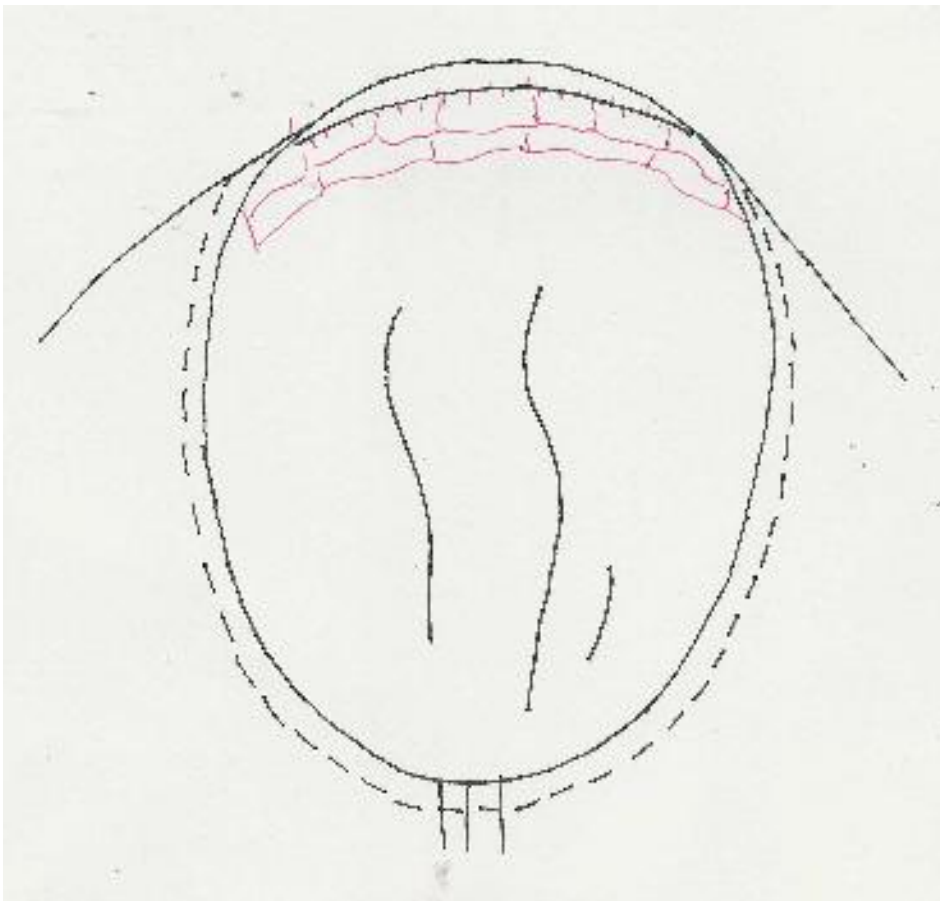
1. With garment on, adjust pad to fit shoulders
- extend pad about $\frac{1}{2}$ " beyond the shoulder
2. Pin from outside. Remove garment and check pad alignment from inside. Straighten if lopsided and recheck fit.
3. Hand stitch pad.



Tip: Always bring pad about $\frac{3}{8}$ " to the front.

Sleeve Heads

1. I use Armo Rite interfacing for all jackets (also used for men's ties).
2. Cut a bias strip about 2" wide and 5" - 8" long.
3. Make a $\frac{3}{4}$ " fold along the length of the strip. Do NOT press.
4. Slipstitch folded edge of padding along seam at cap of sleeve with widest part next to sleeve.



Tips:

- ❖ Adjust armscye lining to compensate for thickness of shoulder pads and to allow for extra fabric needed to go over underarm seam which stands straight up.
- ❖ Seam allowances of a set-in sleeve are NOT pressed but go INTO the sleeve area.
- ❖ Seam allowances of a drop shoulder sleeve are pressed toward the bodice and are very often topstitched.
- ❖ On a garment with a separate sewn-in facing, press the seam open before grading and pressing closed.
- ❖ On a curved dolman sleeve, "crack" the underarm seam (stretch until thread in seam breaks) then resew.
- ❖ Try placing patch pockets on an angle - or stitching the back edge into a side seam for a more sleek appearance.

